

MetroLED

Linear LED Lighting System for Display Illumination



The MetroLED lighting system. Click, twist, play.

LED lighting systems have traditionally been the poor relation to fibre optics when it comes to illuminating objects and artefacts. Poor maintainability combined with light output over which you never felt you had full control have led to the generally superior fibre optic systems taking an overwhelming lead in the display lighting sector.

Until now. Now everything changes.

Universal Fibre Optics are proud to introduce you to MetroLED.

- ▶ **Simple** – even a child can build it
- ▶ **Modular** - it can be assembled in countless configurations
- ▶ **Powerful** – high powered LED's with both spotlight and linear options
- ▶ **Controllable** – dual channel dimming system
- ▶ **Maintainable** – if one LED reaches end of life, replace only that module

MetroLED really does offer all the above and much more, in a discreet, affordable package which can be rebuilt and reconfigured as often as your displays require it. MetroLED allows you to change your lighting as often as you change your exhibits.

- ▶ Need to replace a long linear wash with individual spotlights? No problem.
- ▶ Need to change from wide to narrow angled beams of light to focus on a more intricate object? No problem.
- ▶ Need to mix and match between 3000K or 4000K colour temperatures? No problem.
- ▶ Need to do all of the above at once? MetroLED means that's no problem either.

MetroLED – it really is child's play.



**Luminaire of the Year - Interior
Highly Commended Product**



It's Child's Play

Browsing through this brochure should give you an idea of the flexibility the system allows. Once your appetite has been whetted, please get in touch with your Universal Fibre Optics sales representative to discuss how your exhibits can benefit by using MetroLED.



LIGHT IS NOT SO
MUCH SOMETHING
THAT REVEALS,
AS IT IS ITSELF
THE REVELATION.

– James Turrell

The human skull, opposite, is illuminated by both a vertical light bar and a horizontal bar on the base of the case. The display uses a mixture of linear track as well as both wide and narrow angle spotlights. The linear track provides a general background wash, and we are able to highlight various parts of the skull with the spotlights. Uniform 3000K output provides a warm lighting effect.

The image opposite shows how versatile MetroLED is. These vintage pocket watches require precisely focussed light to pick out the intricate details of their construction. The narrow angle spotlights achieve this with ease, whilst the linear track gives an overall wash. All MetroLED systems incorporate dual dimming circuitry to allow complete control over the lighting scheme.

IN THE RIGHT LIGHT, AT THE RIGHT TIME,
EVERYTHING IS EXTRAORDINARY.

– Aaron Rose





In this system, the lighting designer has employed two gantry systems - one at the front and another at the rear of the display case. Using a combination of 3000K track and narrow angle spotlights allows for an overall light wash, together with tightly focussed beams picking out specific areas of the toys. Finished in grey to match the case, the MetroLED system provides great illumination whilst remaining discreet.

NOTHING TRAVELS FASTER
THAN LIGHT, WITH THE
POSSIBLE EXCEPTION OF
BAD NEWS, WHICH
FOLLOWS ITS OWN RULES.

– Douglas Adams

MetroLED Specifications

LED Specifications

COMPONENT	VARIANT	NOMINAL POWER	WORKING CURRENT	NOTES
Spotlight	3000K	0.5W	100mA	Available in spot and flood fitting
Spotlight	4000K	0.5W	100mA	Available in spot and flood fitting
Linear Light 45mm	3000K	0.4W	80mA	
Linear Light 45mm	4000K	0.4W	80mA	
Linear Light 95mm	3000K	0.8W	160mA	
Linear Light 95mm	4000K	0.8W	160mA	
Linear Light 245mm	3000K	2.3W	460mA	
Linear Light 245mm	4000K	2.3W	460mA	
MetroLED Driver	Version 2	N/A	Variable	Overload indication and shut down

Ordering notes

Rotating corners are available in left and right handed versions. Please suffix code with L or R to signify.

Three types of mounting feet are available - round threaded as well as round and corner screw down.

Two ranges of trumpets available. Classic (CL) & Modern (MO). Classic trumpets have clear or frosted lenses whilst modern ones are clear or diffused.

Both trumpet ranges are available with wide or narrow angled lenses.

Twistlock spot fittings, gooseneck, elbow and linear strip modules are available in both 3K & 4K colour temperature variants.

All parts are available in black, white or grey. Please specify when ordering.

Power supply is available with UK, US or EU plugs. It can be used either with the driver & dimmer or individually if no dimming is required.

Dimmer cover plates fit over a standard single gang lighting pattress and are available in chrome, brass and brushed aluminium finishes.

We are constantly looking at ways to enhance MetroLED, so specifications are subject to change without notice.

General Technical Specifications

DESCRIPTION	DETAILS
Mains supply voltage	100-240V AC, 50/60 Hz
PSU output	5V DC
Min. ambient temperature	-10°C
Max. ambient temperature	+45°C
Power connection	2.1 x 5.5 x 12mm
LED type/model	White light
LED linear CRI	85 (typical)
LED linear colour temperature	3000K and 4000K
LED linear optical efficiency	112 Lumen / W
LED linear current	10mA
LED spot CRI	95 (typical)
LED spot colour temperature	3000K and 4000K
LED spot optical efficiency	66 Lumen / W
LED spot current	100mA
LED life	50,000 hours in ambient 25°C

1
MetroLED Elbow
MTL-EB



2
Driver & Dimmer
MTL-D4 or MTL-D7



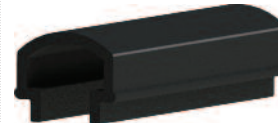
3
Twistlock Spot Fitting
MTL-SL-4K or MTL-SL-3K



4
Mounting Feet
MTL-MF / RT / RS / CS



5
Spare Infill
MTL-INF

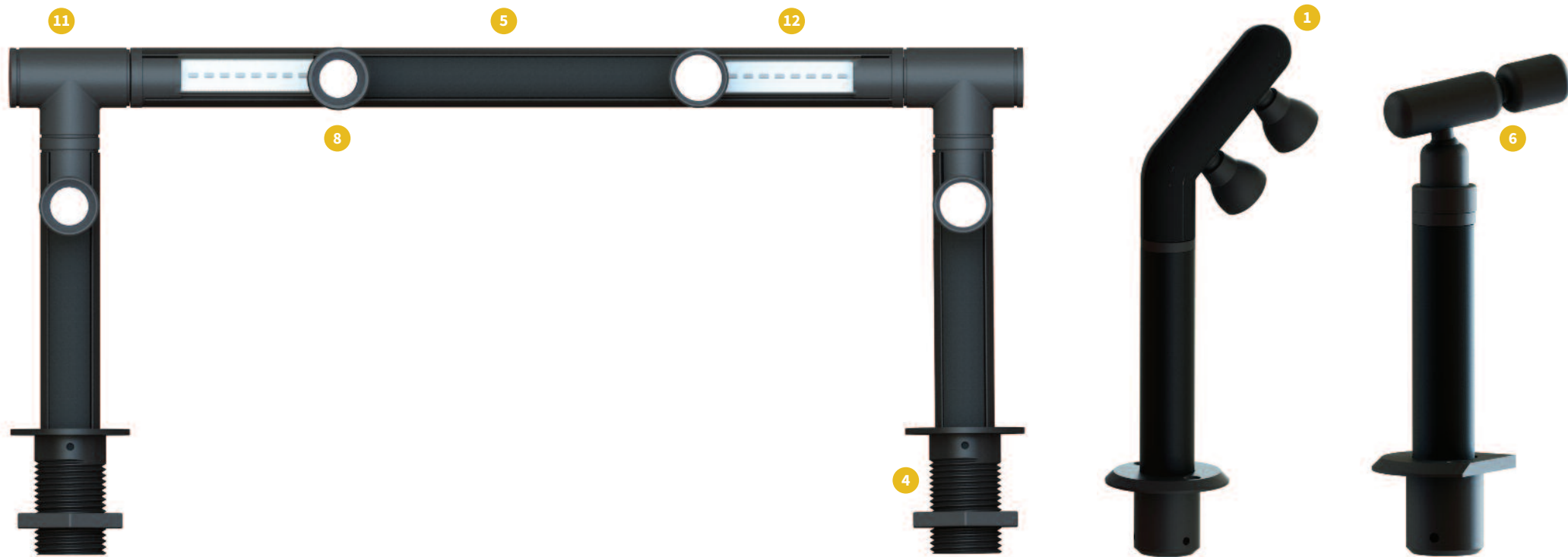


6
MetroLED Gooseneck
MTL-GS3K or MTL-GS4K



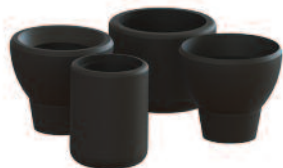
7
Ø20mm Extrusion & Infill
MTL-EI





Coming Soon Rectangular Extrusion | Triangular Extrusion | 15mm MetroLED Mini | LED Cabinet Downlights | Higher Power Output Range

8
Trumpet & Lens Choice
 MTL-LNS-CL / W / N / C / F
 MTL-LNS-MO / W / N / C / D



9
End Cap
 MTL-EC



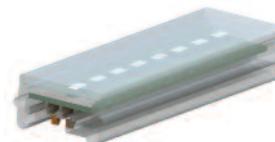
10
Power in Connector
 MTL-PIC



11
Rotating Corner
 MTL-RC / L or MTC-RC / R



12
Linear Strip
45, 95 or 245mm
 MTL-LS45 / 95 / 245 + 3K / 4K



13
Dimmer Cover Plate
 MTL-DP



14
Power Supply Unit
 MTL-PSU / UK / US / EU





Universal Fibre Optics Ltd
Home Place
Coldstream
TD12 4DT
United Kingdom

T: +44 (0)1890 883416
F: +44 (0)1890 883062

Universal Fiber Optic Lighting LLC
6119A Clark Center Avenue
Sarasota
Florida 34238

T: 800 UFO 5554
941 343 8115
F: 941 296 7906



E: info@fibropticlighting.com
W: www.fibropticlighting.com
www.lightingformuseums.com